

Elkay® EZH2O® Hands-Free Sensor-Activated Drinking Fountain (Refrigerated)

SKU: LZO8S2JO

The Elkay Easy Touch Fountain features hands-free, sensor-activated controls for effortless access whilst reducing the chances of cross-contamination from touchpoints. The unit comes standard with a Flexi-guard anti-microbial nozzle for safety.

With its robust, wheelchair-accessible design, and a deep basin to minimise splashing, the Elkay Easy Touch Handsfree Sensor-activated is a popular choice for schools and educational campuses, childcare centres, sporting and commercial facilities, and other public spaces.

Key Inclusions

- Wheelchair Accessible Design
- Filtered and Refrigerated Water
- Stainless Steel Construction
- Sensor Activation
- Quick Fill Rate
- Drainage System to Prevent Stagnant Water Build-up

Special Features

- Antimicrobial Flexi-Guard
- Hands Free - 30 Second Auto Shut Off
- Laminar Flow
- Extra Deep Basin Minimising Splashing
- Integral Drain
- Real Drain
- Visual Filter Monitor

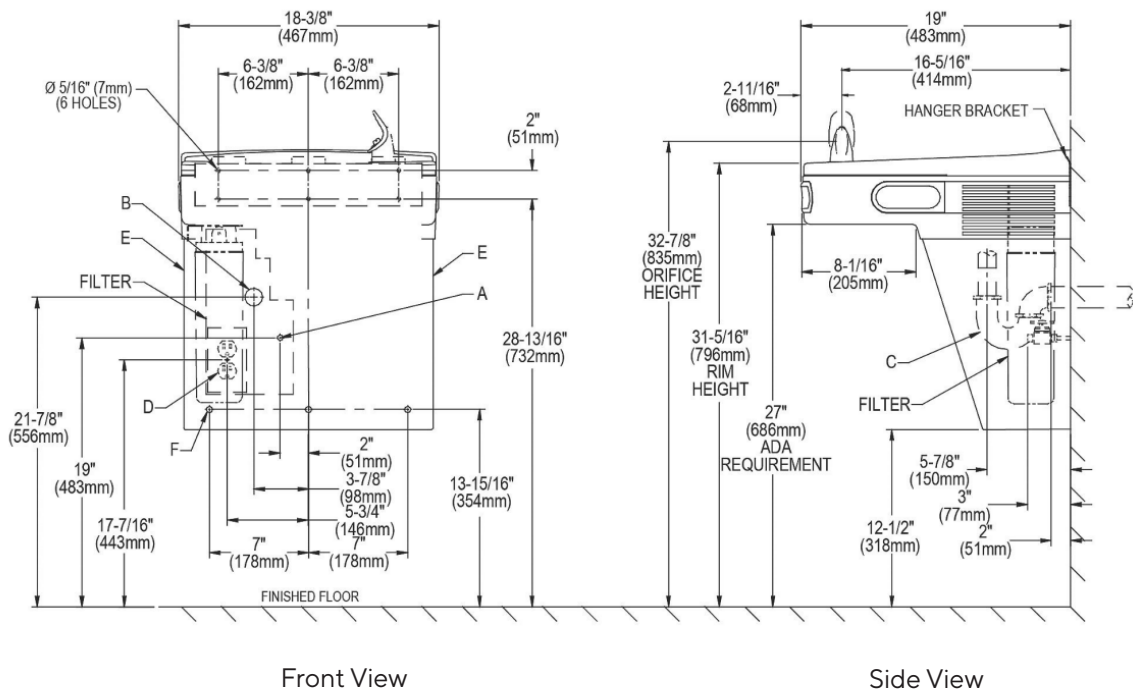


Technical Details

Material and Finish	Stainless steel
Power	220V/50Hz
Drinking Fountain Style	Flexi-Guard Safety Rubber
Activation by	Electronic Sensor bubbler
Mounting Type	Wall Mount (on wall)
Chilling Capacity	30 LPH
Full Load Amps	5
Rated Watts:	370
Filter Option	1 micron or 5 micron
Dimensions	47 x 49 x 51 cm
Shipping Weight	24 kg
Installation Location	Indoor

Specification Text

Elkay EZH2O[®] Wall Mount Hands-free Activation Filtered Refrigerated Stainless. Chilling Capacity of 30LPH (litres per hour) of 10 C drinking water, based on 26 C inlet water and 32 C ambient. Features include Filtered, Hands Free, Visual Filter Monitor. Furnished with Flexi-Guard[®] Safety Bubbler. Electronic Sensor Bubbler activation. Product shall be Wall Mount (On Wall), for Indoor applications. Product code: LZO8S2JO.



Visit civiq.com.au to access the most recent data, CAD files and installation instructions.