

Elkay EZH2O LivPro

Bottle Filling Station

SKU: LBWD2C00WHCK / LBWD2C00BKCK

Serve guests and colleagues cleaner, healthier water in a sustainable way with a stylish in-wall filtered water dispenser.

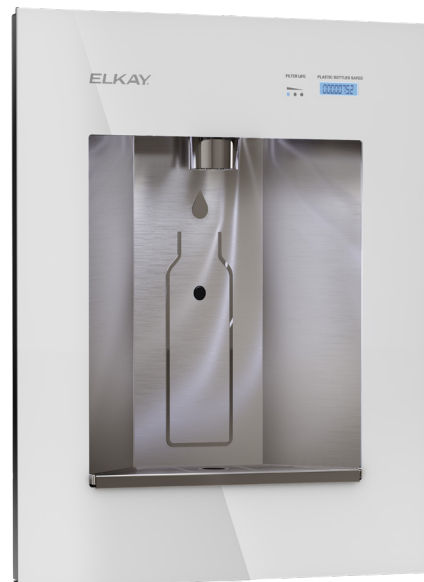
Elkay EZH2O LivPro is a hands-free water dispenser designed for commercial and hospitality environments such as lobbies and conference rooms. Say goodbye to ordering expensive disposable bottled water that takes up precious storage space.

Key Inclusions

- AS1428.2 1992 Bottle Refill
- Fully Recessed In-Wall Design
- Glass and Stainless-Steel Finish
- Auto Sensor Activation
- Quick Fill Rate
- Filtered
- Drainage System To Prevent Stagnant Water Build-Up

Special Features

- Silver-Ion Antimicrobial
- Green Ticker™
- Hands Free
- Laminar Flow
- Real Drain
- Visual Filter Monitor

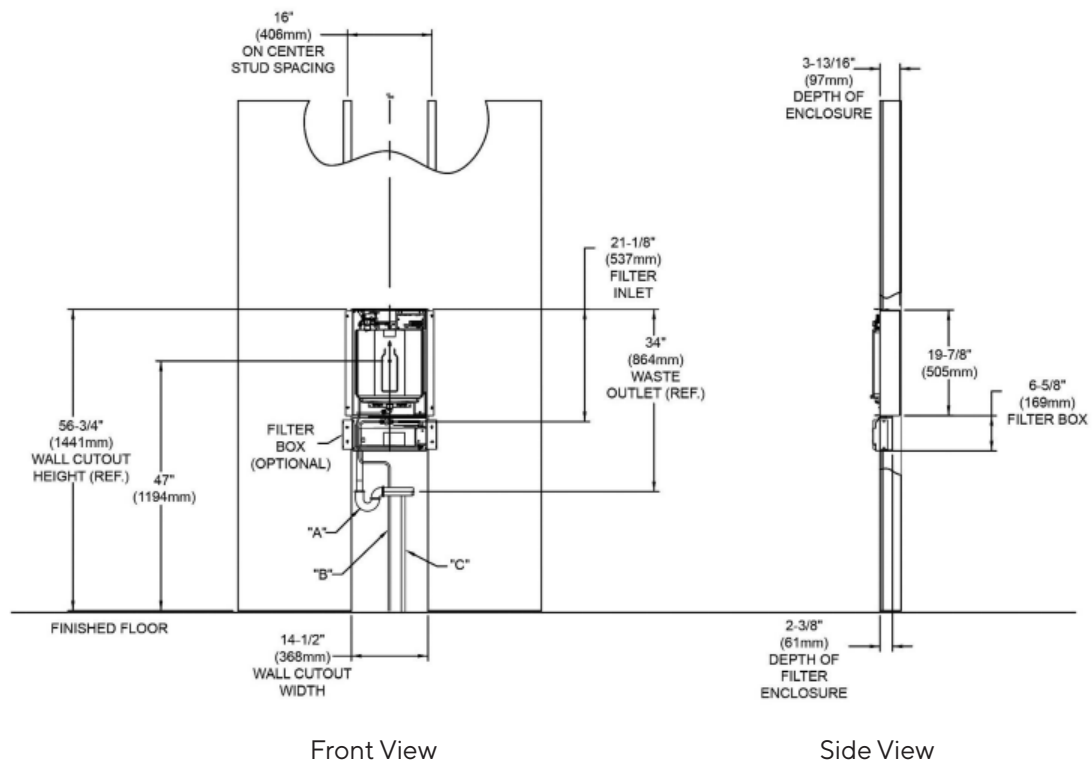


Technical Details

Material and finish	Aspen White (WH), Midnight (BK)
Power	220V/50Hz
Activation by	Electronic Bottle Filler Sensor
Mounting Type	Wall Mount (Inwall Frame/Plate)
Chilling Option	Non-refrigerated
Rated Watts	25
Filter Option	Supplied with ECF3000 Elkay WaterSentry plus commercial water dispenser filter and remote filter cable.
Dimensions	13 x 46 x 72cm
Shipping Weight	19 kg
Installation Location	Indoor

Specification Text

Elkay ezH2O® Liv Pro™ In-Wall Commercial Filtered Water Dispenser Non-refrigerated. Features shall include Ambient Water, Automatic Filter Status Reset, Filtered, Green Ticker™, Hands Free, Laminar Flow, Visual Filter Monitor. Electronic Bottle Filler Sensor activation. Product shall be Wall Mount (Inwall Frame/Plate), for Indoor applications. Product code: LBWDC00WHC, LBWDC00BKC.



Visit civiq.com.au to access the most recent data, CAD files and installation instructions.