

# FlexiDisplay TuffLok

Premium Harsh Duty Lockable Notice & Poster Display Board

Product code: FD-TULO



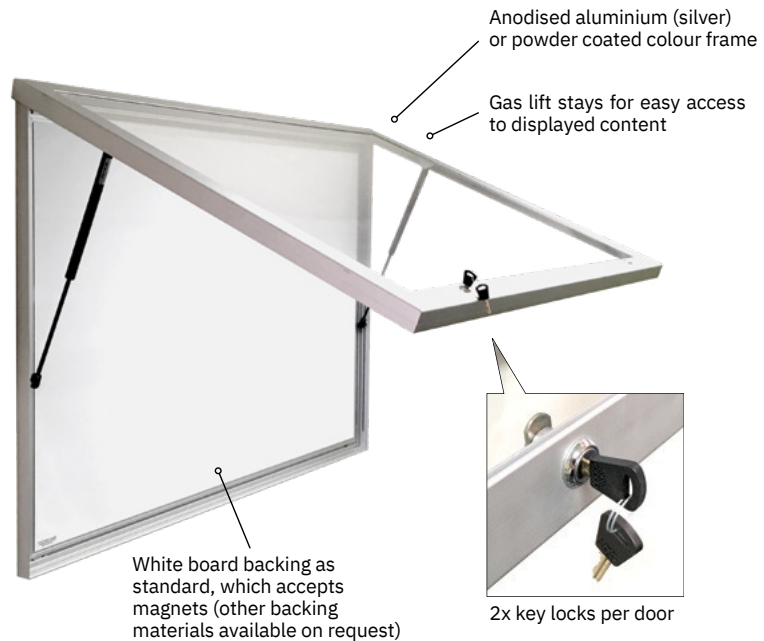
**Civiq.**

1300 600 300  
sales@civiq.com.au  
civiq.com.au

# Tough. Accessible. Reliable.

The FlexiDisplay TuffLok is a versatile and robust lockable notice and poster display board product, designed to withstand the demanding nature of exposed outdoor and indoor public environments.

The display case features an auto gas-lift operable door for safe access, and two key locks for security. Stainless steel hinges, marine grade aluminium frame and a clear polycarbonate window protect displayed graphics from weather, graffiti and everyday dirt and grime. Specified across Australia by leading councils and retailers, the FlexiDisplay TuffLok is the ideal choice for businesses and communities seeking to promote their messages to the public.



## Product features

- Harsh duty engineering
- Suitable for weather and vandal-resistant applications
- Structural marine-grade anodized aluminium frame and concealed fixings
- Auto gas lift door for convenient and safe access
- Two key locks mounted for door security
- 3mm clear polycarbonate window - shatter and burn resistant
- Stainless steel hinges
- Foam tape seals to resist bugs, dirt and water ingress
- Whiteboard backing (as standard)
  - accepts magnets, whiteboard markers, blue tack & adhesive tape
- Designed, developed and manufactured in Australia

## Additional options

- Optional stands for notice boards
  - Basic, Executive or Premium designs
- Optional backing materials
  - Whiteboard
  - Krommenie
- Optional heading graphics on whiteboard
- Optional sign header panel (single or double-sided)



Designed & made in Australia



Display board & stand supplied flat packed with installation instructions

# Civiq

1300 600 300  
sales@civiq.com.au  
civiq.com.au

## Technical details

Frame Finish	Marine-grade structural aluminium extrusion	Overall dimensions	680 x 920mm (fits A1 poster) 790 x 1080mm (fits B1 poster) 840 x 1100mm (fits 30" x 40" poster) 920 x 1280mm (fits A0 poster) 920 x 1580mm 920 x 1880mm 1080 x 1580mm (fits B0 poster) 1080 x 2100mm 1200 x 1200mm 1200 x 1580mm 1200 x 1800mm 1200 x 2100mm 1200 x 2360mm Custom size (on request) All cabinets are 50mm deep Window size is 100mm less than overall Display stands are 3m in height as standard	Equivalent to 8x A4's 10x A4's 10x A4's 16x A4's 14x A4's 21x A4's 21x A4's 31x A4's 21x A4's 26x A4's 29x A4's 33x A4's 37x A4's
	Silver anodised aluminium (standard)			
	Black (powder coat)			
Display Window	3mm Polycarbonate - shatter and burn resistant			
Orientation	Portrait (side-opening gas stay door)			
Backing materials	Landscape (autogas up-lift door)			
	Whiteboard (as standard - interior or exterior use). Accepts strong magnets (supplied). <a href="#">Krommenie (exterior use - choice of 15 colours)</a>			
Illumination Option	Optional edge-lit LED illumination (includes 12V DC Power supply and clock switch)			

## Installation notes

(Wall-mounted system)

The wall-mounted TuffLok display board is fixed in two ways.

The unit first fits over two wall-mounted clips, and is then fixed to the wall with four screws.

All fixing componentry is supplied with the unit.

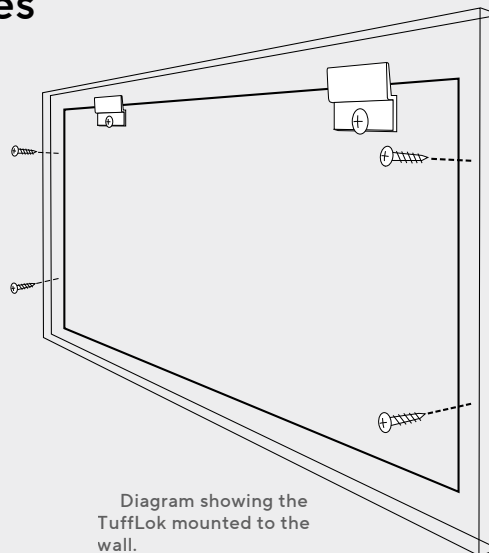


Diagram showing the TuffLok mounted to the wall.

## Cleaning & Maintenance

Typical cleaning products (such as 'Windex' and Isopropyl alcohol) are suitable for use on the display board window and whiteboard back.

Note: Users should avoid cleaning the window surface with strong hydrocarbon solvents (such as acetone, paint thinners and turpentine).

Civiq can supply replacement parts on request, should they be required.

# Poster Display Board

## Configuration options

The TuffLok poster display board can be configured in a range of styles, with colours and finish options for the frame and backing, header panels, as well as night time illumination.

### How it works

#### Step 1

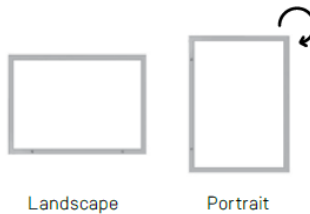
##### Select frame dimensions

680 x 920mm (fits A1 poster)	8x A4's
790 x 1080mm (fits B1 poster)	10x A4's
840 x 1100mm (fits 30" x 40" poster)	10x A4's
920 x 1280mm (fits A0 poster)	16x A4's
920 x 1580mm	14x A4's
920 x 1880mm	21x A4's
1080 x 1580mm (fits B0 poster)	21x A4's
1080 x 2100mm	31x A4's
1200 x 1200mm	21x A4's
1200 x 1580mm	26x A4's
1200 x 1800mm	29x A4's
1200 x 2100mm	33x A4's
1200 x 2360mm	37x A4's

Custom size (on request)

#### Step 2

##### Select frame orientation



Landscape

Portrait

#### Step 3

##### Select frame colour



Silver  
Anodised  
aluminium

Black  
Powder  
coated

#### Step 4

##### Select backing material & colour



STANDARD OPTION

White board backing  
(accepts magnets)

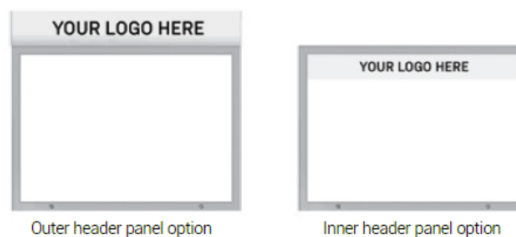


CUSTOM (ADDITIONAL FEE)

See fabric colour charts

#### Step 5

##### Header panel option



Outer header panel option

Inner header panel option

Users may wish to add an additional header panel with the organisation's name and logo.

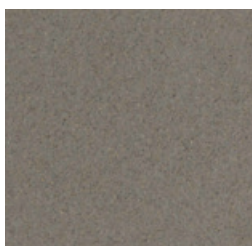
*The outer header panel option sits above the display board.*

*The inner header panel option sits inside the display board.*

# Tufflok Noticeboards

## Krommenie fabric colours

Suitable for outdoor applications



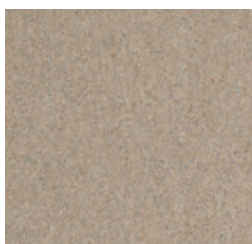
Mushroom medley



Oyster shell



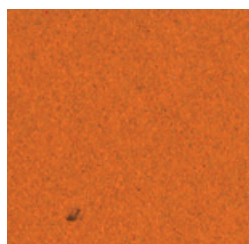
Hot salsa



Brown rice



Potato skin



Tangerine zest



Blanched almond



Duck egg



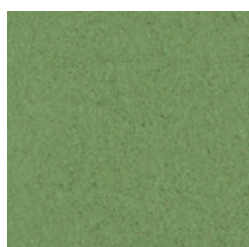
Fresh pineapple



Nutmeg spice



Poppy seed



Baby lettuce



Cinnamon bark



Black olive



Blue berry