

Aquafil Pulse Junior 1200BF

Artwork Instructions

- Create your artwork using CMYK colours.
- Ensure images and rasterised text are 300 dpi when placed at 100%
- Keep all other artwork or logo's in vector format
- Embed all linked graphics, ensuring they are at least 300dpi.
- Convert all fonts to outlines.
- Turn off template guide layer.
- Save the artwork in .pdf.



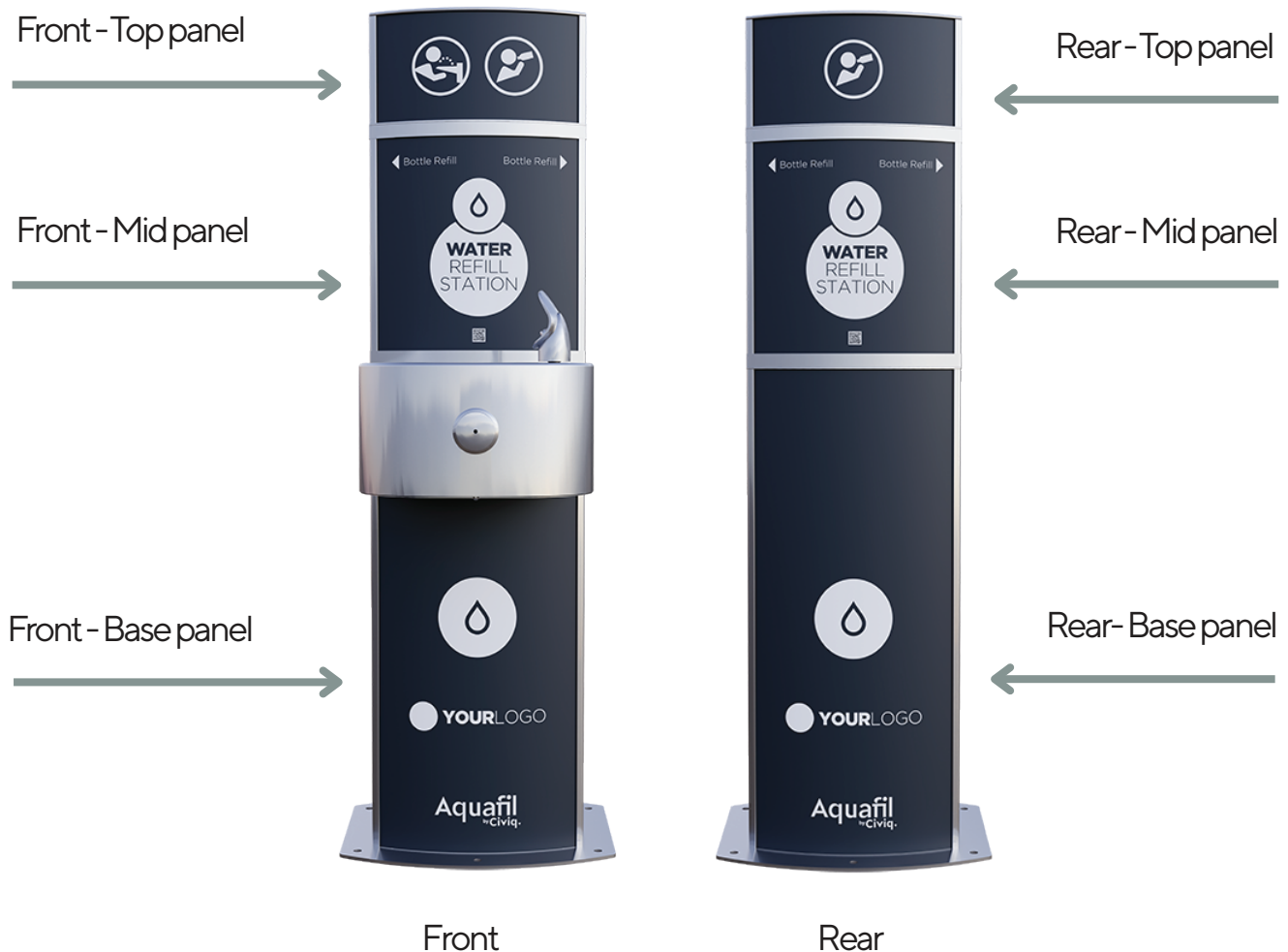
Artwork Safe Area (place all text and elements in this area)



Artwork Bleed (this will get cut off)



No Print Area (outlets or other components will cover artwork)





A diagram of a rectangular panel. The panel is light gray and is surrounded by a white border with diagonal hatching. A horizontal red double-headed arrow spans the width of the panel, with the text '286mm' above it. A vertical red double-headed arrow spans the height of the panel, with the text '150mm' to its left. The text 'VISIBLE ARTWORK' is written horizontally across the middle of the panel and vertically along the right side. The text 'Front - Top panel' is written in the lower-left area of the panel.

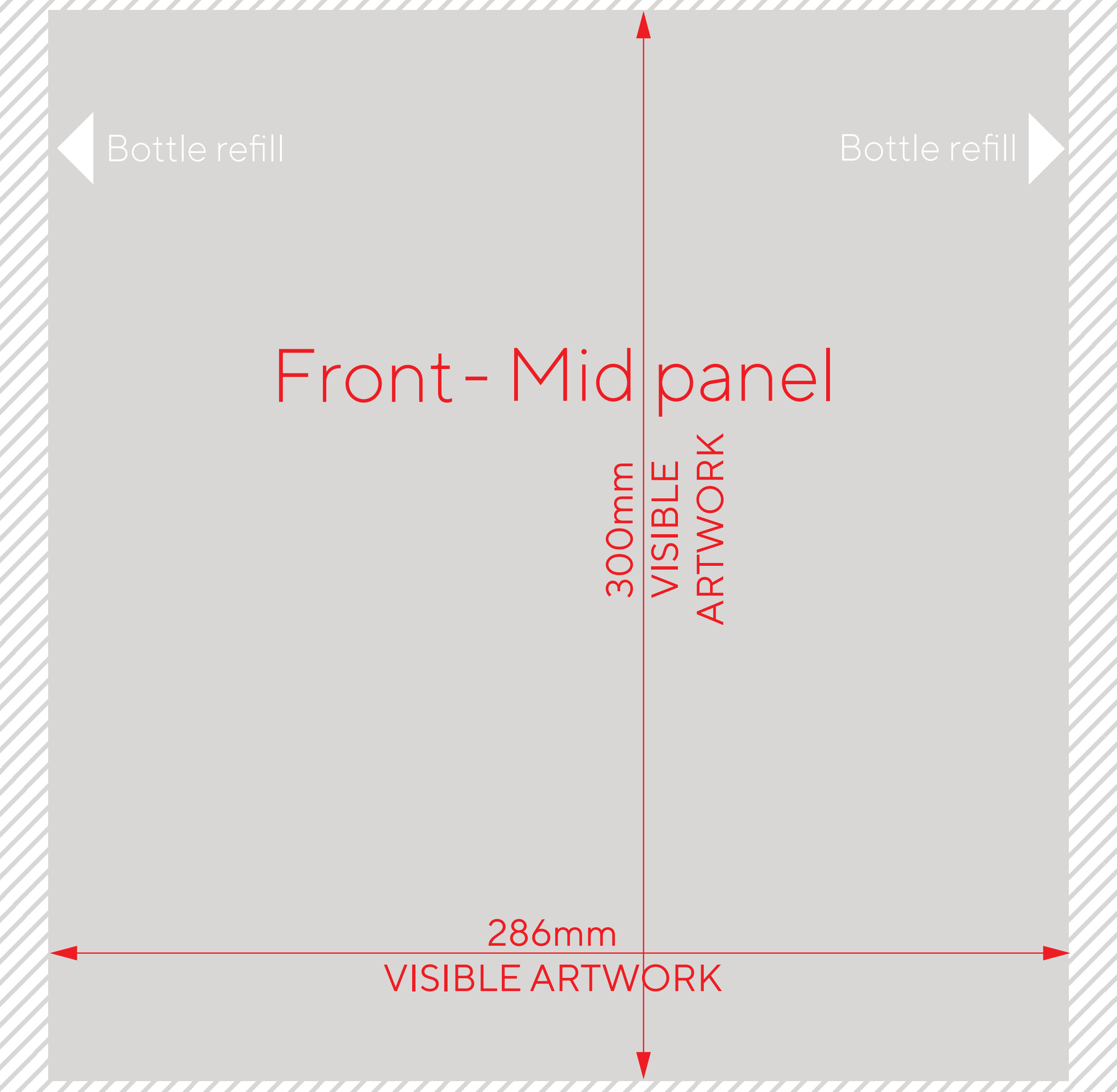
286mm

VISIBLE ARTWORK

150mm

VISIBLE
ARTWORK

Front - Top panel



Bottle refill

Bottle refill

Front - Mid panel

300mm

VISIBLE
ARTWORK

286mm

VISIBLE ARTWORK

286mm

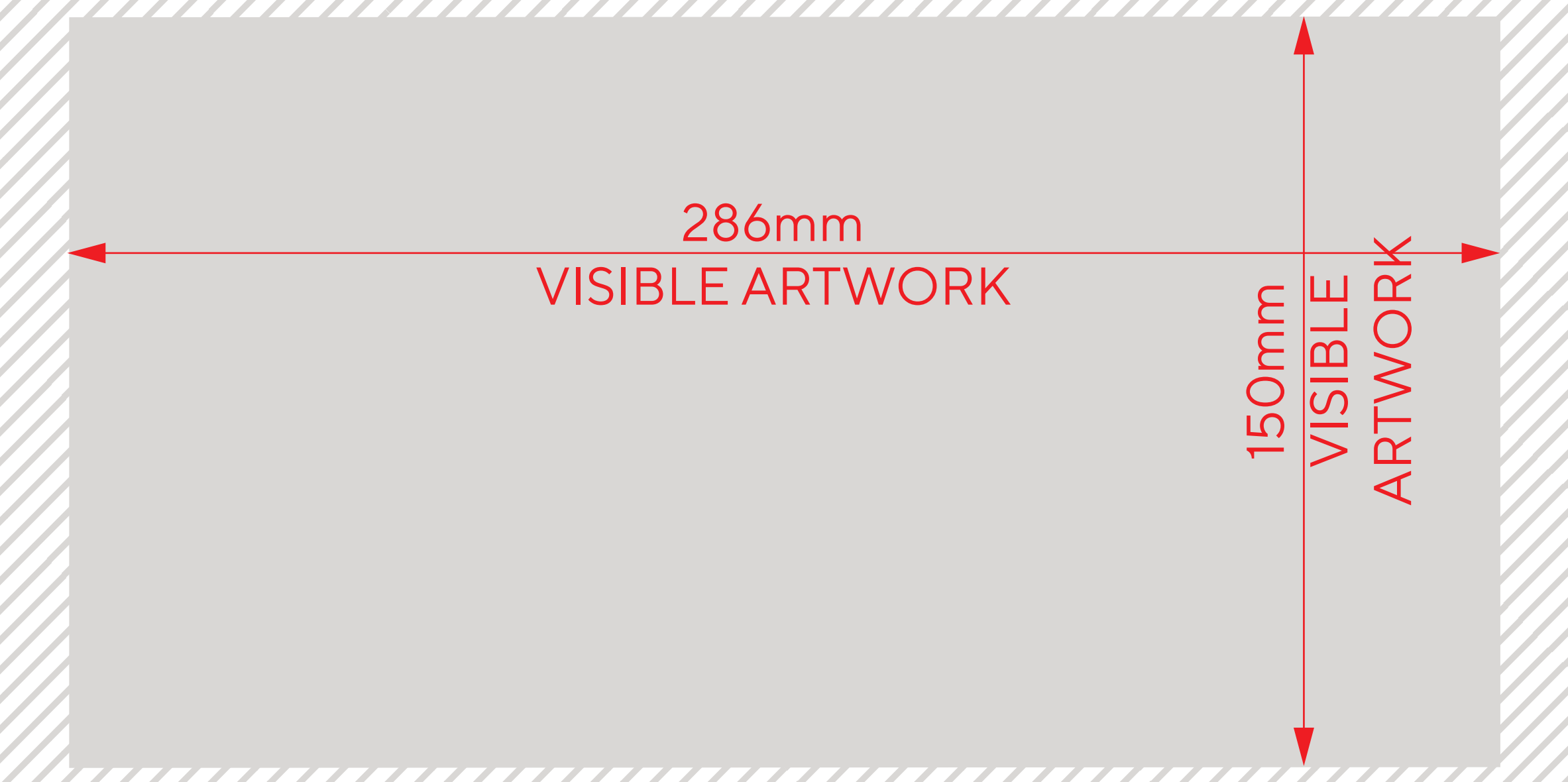
VISIBLE ARTWORK

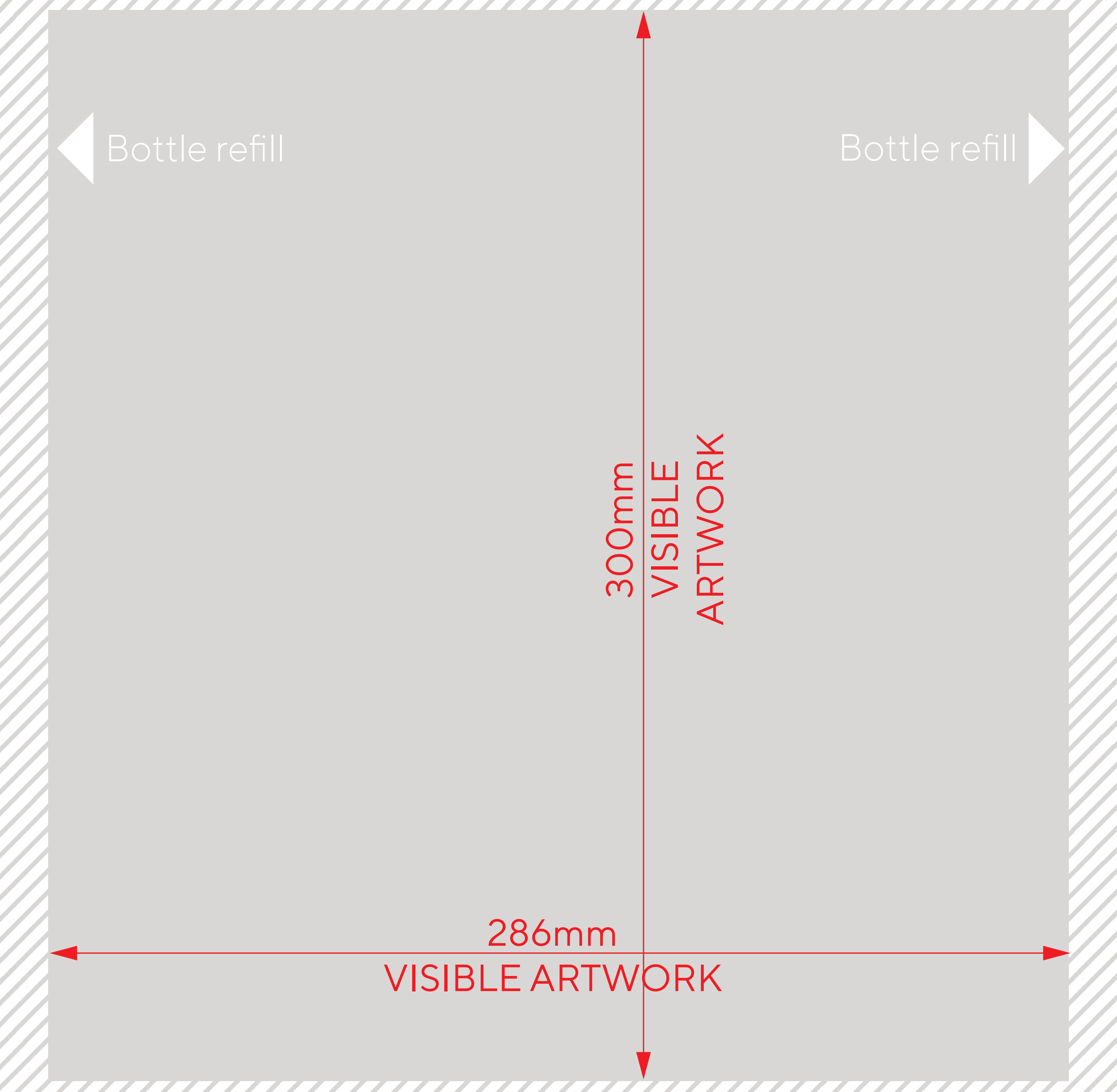
Front - Base panel

530mm

VISIBLE ARTWORK

Aquañil
by Civiq.





Bottle refill

Bottle refill

300mm

VISIBLE
ARTWORK

286mm

VISIBLE ARTWORK

286mm
VISIBLE ARTWORK

Rear - Base panel

700mm
VISIBLE ARTWORK

Aquañil
by Civiq